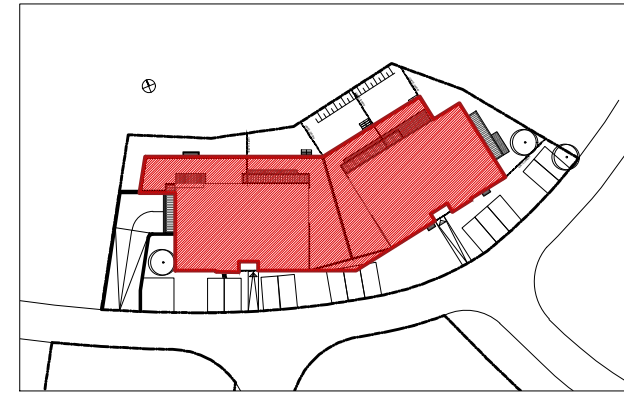


62a-62b

SOUS SOL



- | | |
|-----------------------------|-----------------------------|
| CAVE 1 A 6.0m ² | CAVE 1 B 5.5 m ² |
| CAVE 2 A 6.0 m ² | CAVE 2 B 3.7 m ² |
| CAVE 3 A 3.7 m ² | CAVE 3 B 5.4 m ² |
| CAVE 4 A 3.7 m ² | CAVE 4 B 5.3 m ² |
| CAVE 5 A 5.9 m ² | CAVE 5 B 5.3 m ² |
| CAVE 6 A 6.2 m ² | CAVE 6 B 7.4 m ² |
| CAVE 7 A 6.1 m ² | CAVE 7 B 5.4 m ² |
| | CAVE 8 B 7.4 m ² |

